

OSFL 19-20 Health and Safety Assessment

In alignment with OSFL Strategic Priorities:

Health & Safety, Collaboration-Partnerships, and Education,

OSFL was able to coordinate health and safety orientations/presentations during the Fall 2019 academic term for the National Pan-Hellenic Council (NPHC),

Multicultural Greek Council (MGC), Panhellenic, and Inter-Fraternity Council (IFC).

As a result of these sessions, OSFL was able to engage new and potential new members on the front end of their respective membership processes to target two primary outcomes:

1. Students will be able to identify risky behaviors
2. Students will identify health and safety resources on campus

Topics of Discussion

Alcohol Facts

Title IX

Hazing Prevention

974-HELP

Benchmarks



85% of new/potential members will be able to identify at least:

- 1 at Risk Behavior that could occur during membership
- 1 campus resource to contact for health and safety issues

Panhellenic

86% identified at least 1 campus resource to contact for health and safety issues

*3% increase

Common Themes: 974-HELP, Student Health Center

94% identified at least 1 risk factor that could occur during membership

*32% increase

Common Themes: Alcohol abuse, Sexual assault



IFC

70% identified at least 1 campus resource to contact for health and safety issues

Common Themes: IFC, Student Health Center

81% identified at least 1 risk factor that could occur during membership

Common Themes: Hazing, Drugs/Alcohol

*Due to transition, IFC was not able to participate last year



NPHC

95% identified at least 1 campus resource to contact for health and safety issues

Common Themes: 974-HELP, Title IX

100% identified at least 1 risk factor that could occur during membership

*36% increase

Common Themes: Mental Health, Drug Abuse

MGC

100% identified at least 1 campus resource to contact for health and safety issues

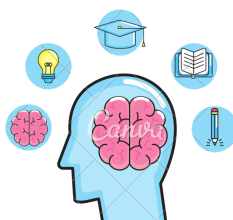
*14% increase

Common Themes: 974-HELP, Title IX

100% identified at least 1 risk factor that could occur during membership

*29% increase

Common Themes: Stress



Student Reflections

"I learned about the different statistics about hazing, alcohol abuse, and sexual misconduct that have resulted in severe consequences."

"The presentation helped bring awareness of the possible consequences such as grades dropping, the no-hazing policy, consent, active bystanders, and several websites such as Title IX and 974-HELP."

"I feel the presentation covered nearly all the topics to help reduce risk for potential new members, one other topic that could help would be social media."

Observation

As a result of reframing the questions/statements in each council's Health and Safety Education Session to identify information, "Noted in the Presentation" new members/potential members had a clearer understanding of what *specific* content OSFL was looking for.

Next Steps

Using the Social Ecological Model, OSFL will explore the impact external and internal stakeholders have on new members decision to use health and safety competencies gained during their membership process.