



# 2016 SORORITY SCOPE

*university of tennessee, knoxville*

# JOIN YOUR SORORITY SISTERS AT CROWNE!



**HURRY!**  
WE ARE FILLING UP FAST!  
Don't miss the opportunity to live  
next to your sorority sisters!  
Present this ad on your first visit to receive  
**\$150 off**  
first full month.  
Don't miss out! Get on  
**FALL 2017**  
reservation list NOW!

- 1, 2 and 3 **LARGE** bedroom plans with **LARGE** walk-in closets
- Resort-style pool, sun deck & fire pit
- Gameroom & fitness center
- Stylish clubhouse
- Full size washer & dryer included
- High speed internet & cable included
- Computer/study center
- 24-hour emergency maintenance
- 10 FREE Crowne Parking Lots

**CROWNE**  
at CAMPUS POINTE

STYLISH APARTMENT LIVING  
**(865) 633-9422**  
[crownecampuspointe.com](http://crownecampuspointe.com)  
2240 Grand Avenue • Knoxville, TN 37916



Walking distance to campus, just off the strip on Grand Avenue!

# Panhellenic Recruitment Team



*Rebecca, Elisabeth, Kellie, Caroline, Miranda*

Elisabeth Logan	Panhellenic President
Kellie Larsen	Vice President of Recruitment
Miranda Laugherty	Vice President of Recruitment Counselors
Rebecca Craft	Assistant Vice President of Recruitment
Caroline Dodd	Assistant Vice President of Recruitment Counselors

## CONTACT INFORMATION

### Address

Sorority Village Center  
2950 Sorority Village Circle  
Knoxville, TN 37916

Office Phone Number  
(856) 974-6604

Website  
[www.GoGreek.utk.edu/panhellenic](http://www.GoGreek.utk.edu/panhellenic)

### Email

[utkrecruitment@gmail.com](mailto:utkrecruitment@gmail.com)

Twitter and Instagram  
[@UTKPanhellenic](https://twitter.com/UTKPanhellenic)

### Pinterest

[www.pinterest.com/utkpan/](http://www.pinterest.com/utkpan/)

Greek Life Social Media  
Twitter: [@GoVolsGoGreek](https://twitter.com/GoVolsGoGreek)  
Instagram: [UTK\\_Greek\\_Life](https://www.instagram.com/UTK_Greek_Life)

# Contents

Letters to Potential New Members  
page 2

Panhellenic Philanthropy  
Circle of Sisterhood  
page 3

Office of Sorority & Fraternity Life  
Panhellenic Council  
National Panhellenic Council (NPHC)  
Multicultural Greek Council (MGC)  
Interfraternity Council (IFC)  
page 4

Mutual Selection Process  
Statement on Legacies  
Orientation/Move In Day  
Recommendation Letters  
page 5

Recruitment Attendance  
Membership Acceptance Binding Agreement (MRABA)  
PNM Bill of Rights  
page 6

Recruitment Counselors  
Potential New Member Checklist  
page 7

Sorority Membership:  
Scholarship  
Service  
Financial Commitments  
page 8

Sorority Membership:  
Sisterhood  
Leadership  
Academic Commitments  
page 9

Leadership Opportunities  
Junior Panhellenic  
Panhellenic Directors  
Get InVOLed  
page 10

Values Based Recruitment  
Values Quiz  
page 11

Important Dates  
page 12

Policies:  
Alcohol  
Hazing  
Equal Opportunity & Non Discrimination  
Disclaimer  
Disabilities  
page 13

Recruitment Schedule  
page 14

Outfit Examples  
page 15

Sorority Village Map  
Greek Alphabet  
page 16

Panhellenic Chapters  
pages 17 - 29

Frequently Asked Questions  
Terms to Know  
pages 30 - 31



Jennifer Pierce  
Assistant Director  
Sorority & Fraternity Life

Hands down the best thing I ever did in college was join my sorority. It's been 15 years since I became a lifelong member and the values, friendships, and personal development that I have gained along the way have changed my life. I truly believe in the power of sororities and fraternities. I believe that when you can find an organization and a group of people that push you to be a better individual, something magical happens. Within my organization, I was able to find my passion for my career of working with college students and my personal passion of supporting our philanthropic mission. When women take a stand and work together to better our communities, we can move mountains. And that's what this thing called sorority is all about. It's not about the t-shirts, it's not about the parties, and it's not about getting enough points to go to formal. It's about becoming a part of something so much bigger than yourself, your chapter, your university. It's an introduction to the type of women we can all be should we chose to take the challenge.

No matter what, every single one of our chapters offer boundless opportunities to create special bonds and friendships, develop as leaders, give back to our community, and to have an all-around amazing experience. Best of luck on your journey!

Go Greek, Go Vols!

Jennifer Pierce  
Assistant Director Sorority & Fraternity Life



Kellie Larsen & Miranda Laugherty

Welcome to the University of Tennessee!

As the representatives for more than 2,390 sorority women, we congratulate you on your acceptance and decision to make Rocky Top your home away from home! You will embark on many exciting learning experiences, but perhaps none as well-rounded and memorable as being a member of a Greek organization. The Greek community at the University of Tennessee has enhanced the lives of thousands of students for over 130 years. The decisions you make during formal recruitment will not only enhance your time here, but also the rest of your life.

The Panhellenic Council takes pride in holding ourselves accountable for our values: leadership and personal development, service, intercultural experiences, and the promotion of fraternal excellence. As the week progresses, we hope that you look for the chapter that aligns best with your personal values and a place you can call home.

No matter which sorority you choose, the Panhellenic friendships you form will be lifelong. A sorority is much more than just a house to live in – it is a group of women drawn together by mutual goals, trust, and respect.

Beginning with your first day of Formal Recruitment, you will be part of a group of women with whom you can share your college experience. There are 86 enthusiastic and well-trained Recruitment Counselors (Gamma Chi's) that will help guide you through the recruitment process and offer assistance along the way.

This publication will serve as a guidebook as you embark on this journey into sorority life at the University of Tennessee. If you have any questions, please refer to our contact information on page 1.

We hope you enjoy formal recruitment and decide to become part of our Greek community. We wish you the best in your future at The University of Tennessee!

Kellie Larsen  
Vice President of Recruitment

Miranda Laugherty  
Vice President of Recruitment Counselors



In addition to each chapter's philanthropic organization, the Panhellenic Community supports the Circle of Sisterhood Foundation. Circle of Sisterhood is a non-profit organization founded and powered by sorority women. Their mission is to raise financial resources to remove educational barriers for women and girls facing poverty and oppression.

The Circle of Sisterhood Foundation is a mechanism by which all sorority women can stand together across affiliation, age, color, and creed to make a difference in the lives of millions of women and girls around the world. Standing together as one community, The Circle of Sisterhood Foundation and the Panhellenic community at the University of Tennessee believe that we can provide women and girls an equal opportunity through education, trade skills, or even a college degree.

Sorority women represent one of the largest identifiable groups of college-educated women in the world. Our Panhellenic community is lucky to work with such an incredible organization and make a difference in the lives of women and girls across the world. Over the past 2 years, our community has raised enough money to fund a school build in Haiti. Also, we are so excited to send 13 of our very own members to break ground on a Circle of Sisterhood-funded school in Malawi, Africa in the summer of 2016.



**Why is it so important to empower women and remove educational barriers?**

“One study after another has shown that educating girls is one of the most effective ways to fight poverty. Schooling is often a precondition for girls and women to stand up against injustice, and for women to be integrated into the economy. Until women are numerate and literate, it is difficult for them to start businesses or contribute meaningfully to their economies.” - Half the Sky

After reading the book, *Half the Sky*, Circle of Sisterhood founder, Ginny Carroll made it her mission to empower women through education.





THE UNIVERSITY OF  
TENNESSEE  
KNOXVILLE

OFFICE OF SORORITY &  
FRATERNITY LIFE

# Office of Sorority & Fraternity Life

## PANHELLENIC COUNCIL

### PANHELLENIC COUNCIL

Alpha Chi Omega  
Alpha Delta Pi  
Alpha Omicron Pi  
Chi Omega  
Delta Delta Delta  
Delta Gamma  
Delta Zeta  
Kappa Delta  
Kappa Kappa Gamma  
Phi Mu  
Pi Beta Phi  
Sigma Kappa  
Zeta Tau Alpha

The Panhellenic Council is the governing body of the 13 National Panhellenic Conference chapters at the University of Tennessee, Knoxville. The council serves as the liaison between the sororities, other campus organizations, and the university administration. The Panhellenic Council is led by executive officers elected by the previous council. A delegate from each of the 13 chapters is also a part of the governing council, but every sorority member is considered a Panhellenic woman and must hold herself to the highest standard. The Panhellenic Council is actively involved with providing educational and leadership opportunities, coordinating campus-wide and community service projects, and the overall development of the sorority community.

## NATIONAL PAN-HELLENIC COUNCIL (NPHC)

### NATIONAL PANHELLENIC COUNCIL

Alpha Kappa Alpha  
Iota Phi Theta  
Kappa Alpha Psi  
Omega Psi Phi  
Phi Beta Sigma  
Sigma Gamma Rho  
Zeta Phi Beta

NPHC is comprised of nine historically black fraternities and sororities, also known as the "Divine Nine." At the University of Tennessee, we are lucky to have 7 of these 9 organizations. These organizations live by their values of tradition, academic achievement, community service, leadership, and lifetime brotherhood/sisterhood, and produce leaders who engage in political, social, and cultural activities.

## MULTICULTURAL GREEK COUNCIL (MGC)

### MULTICULTURAL GREEK COUNCIL

Beta Chi Theta  
Delta Phi Omega  
Sigma Beta Rho  
Sigma Sigma Rho

MGC is comprised of four multicultural sororities and fraternities, primarily representing a South-Asian based fraternity as well as Latina and South-Asian based sororities. The council is united by their aspirations to increase awareness of their respective cultures, to serve the UT community, and to maintain high academic standards.

## INTERFRATERNITY COUNCIL (IFC)

### INTERFRATERNITY COUNCIL

Alpha Gamma Rho  
Alpha Tau Omega  
Beta Theta Pi  
Chi Phi  
Delta Tau Delta  
Farmhouse  
Kappa Alpha Order  
Kappa Sigma  
Phi Delta Theta  
Phi Gamma Delta  
Phi Kappa Psi  
Phi Sigma Kappa  
Sigma Alpha Epsilon  
Sigma Chi  
Sigma Nu  
Sigma Phi Epsilon

IFC governs the 16 Interfraternity Conference organizations at the University of Tennessee. Their mission is to develop men who lead with integrity, encourage a high level of scholarship, support the development of each chapter, promote a sense of community, and strive to set a standard of excellence for themselves and others at the University of Tennessee.

If you are interested in any of these organizations,  
visit our website at [www.GoGreek.utk.edu](http://www.GoGreek.utk.edu).

# Mutual Selection Process

Recruitment is a mutual selection process that balances the preferences of each potential new member with the preferences of the existing chapters she has been invited to attend. The Panhellenic Council strives to allow every potential new member an opportunity to find a chapter that best aligns with her values, interests, future goals, and personality while providing an organized and unbiased membership selection process.

Invitations are only guaranteed on the first round of recruitment, Go Greek round. There is no guarantee that a potential new member will be invited back to Philanthropy Round, Sisterhood Round, Preference Round, and Bid Day. Invitations are based on the mutual selection process explained above. Potential new members are encouraged to maximize their options in order to meet with as many chapters as possible during the recruitment experience. It is important to keep an open mind during recruitment to find a chapter that suits you best!

## Statement on Legacies

A legacy is defined as a woman whose sister, mother, or grandmother is a member of a National Panhellenic Conference sorority. It is important to remember that a sorority is not obligated to offer a bid to a legacy, and a potential new member is not obligated to join her legacy chapter. Keep in mind that the decision to join a specific chapter rests with the potential new member. The potential new member should not feel pressured to make a decision based on her legacy affiliation. Please remember that a potential new member should make her decision based on where she feels most comfortable, rather than the experience of another individual.

## Orientation

Orientation for participants and parents prior to Formal Recruitment will be held on August 10th, at 6:00 PM in Thompson Boling Arena. During the orientation, participants will meet their assigned Recruitment Counselor and group while receiving vital information for the upcoming week. There will also be an informational session for parents during this time.

## Move in Day

If you are signed up to live in university housing, once you are registered for Formal Recruitment, you will automatically be scheduled for an earlier move in day! This move in day will take place on Wednesday, August 10th beginning at 9:00 AM. Moving into university housing early does not have any additional fees. Any questions and additional information can be directed to University Housing, (865) 974-2571.

## RECOMMENDATION LETTERS

A letter of recommendation is written on behalf of a potential new member by an alumna to her sorority. Additionally, many chapters have different requirements for letters of recommendation. To find out more about who can write a letter of recommendation, please visit the organization's national website or [www.GoGreek.utk.edu/panhellenic](http://www.GoGreek.utk.edu/panhellenic).

This letter acts as an introduction of the potential new member to the collegiate chapter. The letter should include information about the potential new member's academic history, volunteer work, extracurricular activities, character, and anything else a chapter may need to know.

All letters of recommendation must be submitted prior to August 1st to ensure that chapters have adequate time to review the information.

Recommendation Letters may be considered in the membership selection process.

**Having trouble finding an alumna to write a letter of recommendation? Check out [www.GoGreek.utk.edu/panhellenic](http://www.GoGreek.utk.edu/panhellenic) for resources and connections to alumnae chapters.**

## PNM BILL OF RIGHTS

1. The right to be treated as an individual.
2. The right to be fully informed about the recruitment process.
3. The right to ask questions and receive true, objective answers from the recruitment counselors and sorority members.
4. The right to be treated with respect.
5. The right to be treated as a capable mature person without being patronized.
6. The right to ask how and why and receive straight answers.
7. The right to have and express opinions to recruitment counselors.
8. The right to have inviolable confidentiality when sharing information with recruitment counselors.
9. The right to make informed choices without undue pressure from others.
10. The right to be fully informed about the binding agreements implicit in the membership acceptance signing.
11. The right to make one's own choice and decision and accept full responsibility for the results of that decision
12. The right to have a positive and enriching recruitment experience.

## Recruitment Attendance

Recruitment, much like sorority membership itself, is a process that requires a reasonable commitment of time and effort. The Panhellenic Council has a no-tolerance policy regarding missed days or events. Women participating in recruitment must be available to attend all scheduled events; exceptions will be made only for university-related events. When you receive your recruitment schedule, it's expected that you will attend all of the events to which you are invited. Failing to show up may result in dismissal from Formal Recruitment.

Although recruitment attendance is important, university related events such as welcome week activities, orientation, advising appointments, or any other academic related activities should be prioritized ahead of recruitment events. If you are aware of a schedule conflict, please contact your Recruitment Counselor immediately and the recruitment team will work to edit your schedule.

## Membership Acceptance Binding Agreement (MRABA)

Recruitment is a mutual selection process that balances the preferences of each potential new member with the preferences of the existing chapters she has been invited to attend. The Panhellenic Council strives to allow every potential new member an opportunity to find a chapter that best aligns with her values, interests, future goals, and personality while providing an organized and unbiased membership selection process.

Invitations are only guaranteed on the first round of recruitment, Go Greek round. There is no guarantee that a potential new member will be invited back to Philanthropy Round, Sisterhood Round, Preference Round, and Bid Day. Invitations are based on the mutual selection process explained above. Potential new members are encouraged to maximize their options in order to meet with as many chapters as possible during the recruitment experience. It is important to keep an open mind during recruitment to find a chapter that suits you best!





# Recruitment Counselors



A Recruitment Counselor, commonly known as a Gamma Chi, is a member of one of our 13 chapters at the University of Tennessee who has taken on the role of disaffiliating from her chapter in order to provide an unbiased opinion for the potential new members. Recruitment Counselors will not partake in any form of communication with any member of their chapter, or any other chapter, throughout the week of recruitment or partake in their chapter's recruitment process. The Gamma Chi's have been chosen through a Panhellenic selection process and have been trained through a semester long leadership course this past spring. Each potential new member will be assigned a Gamma Chi for the week of recruitment who is available for the potential new member's benefit. Please take advantage of your recruitment counselor because she can offer valuable information regarding sorority life, academic classes, and other opportunities waiting for you here at the University of Tennessee! Anything discussed with a Gamma Chi is confidential, so don't be afraid to reach out to them with your frustrations, concerns, and questions.



# Financial Commitments

The financial requirements of joining a sorority vary widely from chapter to chapter. The main costs associated with becoming a member of a sorority at the University of Tennessee consist of one-time new member fees, chapter dues, meal plans, house fees and miscellaneous fees specific to each chapter. In addition to mandatory expenses, there may also be additional optional expenses such as t-shirts. Payment options, such as forms of payment and payment due dates, vary from chapter to chapter as well.

It is important to consider all of the financial obligations associated with joining a sorority. For additional information, please refer to each individual chapter on our website or in the back of this booklet. We encourage you to ask any questions you might have regarding the potential costs of membership. Chapter members will also be discussing the financial obligations during the Sisterhood Round of recruitment.

# Sorority Membership

## Scholarship

All Sorority GPA is higher than the All Women's Average GPA!

The purpose of college is to receive an education and sororities are fully dedicated to the values of academic achievement.

Chapters often encourage study hours, incentives for good grades, and support members facing challenges in their academics.

The Panhellenic GPA for 2015 was 3.21.

## Service

Involvement in community service and philanthropies are a huge priority among all chapters.

Each chapter works to benefit different national and local organizations, which are highlighted on the sorority profile pages of this booklet.

In the 2014-2015 school year, the 13 chapters collectively raised over \$223,000.00 for local and national charities.

Sorority women also completed over 21,300 of community service hours throughout the 2014-2015 school year.

# Sorority Membership

## Sisterhood

The bond of sisterhood is a life-long friendship that is cultivated through international, regional, and chapter activities and relationships.

Being a sorority member is a life-long commitment. Becoming a member of a sorority is different than joining any other club or organization because when you join, you don't just join for four years, you join for life. Your sorority membership goes well beyond your college years and can continue to provide you with all kinds of benefits such as post-graduate scholarship opportunities, educational and volunteer leadership experiences, and continued social interactions with alumnae members from all around the country.

Greek life gives you the opportunity for leadership within your organization and throughout campus.

Each sorority also encourages members to be involved in outside organizations. You will see our members all across campus as orientation leaders, RAs, serving on SGA, participating in athletics, or helping plan campus events such as Homecoming.

## Academic Commitments

The Panhellenic Council does not set specific academic requirements/standards for potential new members to participate in recruitment. However, it is important to understand each chapter has grade point average requirements set by its inter/national organization and the local members.

If you have any concerns regarding your GPA, you are encouraged to mail a copy of your transcript to:

Office of Sorority &  
Fraternity Life  
Attn: Jennifer Pierce  
2950 Sorority Village Circle  
Knoxville, TN 37916

## Leadership

# GET INVOLVED

Many of our chapter members are involved in campus organizations outside of Greek Life. Check out the organizations below and many others for ways to get involved at the University of Tennessee and serve the community!

1. All Campus Events (ACE)
2. Center for Leadership & Service Opportunities
3. Best Buddies at UTK
4. The Orange & White Corps
5. Relay For Life
6. She's the First at UTK
7. Student Government Association (SGA)
8. Freshman Council
9. EcoVols
10. For The Kids @ UTK
11. Habitat for Humanity Campus Chapter
12. YoungLife
13. Orientation Leaders
14. Residence Hall Association
15. Student Alumni Associates
16. Timettes
17. Ambassadors

## Leadership Opportunities



Throughout your time in a chapter, you will be encouraged to serve in a leadership position(s). The time commitments for these may vary, as positions can range from coordinating a short term event, being on a committee, fundraising, or holding an executive office. We encourage you to get involved within your chapter but also within organizations on campus. Statistically, students who are more engaged with their campus are more likely to graduate on time and have a higher GPA. Leadership positions provide leadership development, communication, event planning skills, and experiences working with a team.

## Junior Panhellenic

Junior Panhellenic is a committee of young women in their first year of their sorority membership. Alongside the Junior Panhellenic Director, this board helps organize events for new members, plans the annual lip sync competition, and helps smooth the transition into college and Greek Life within the Panhellenic Community. Being a member of the Junior Panhellenic Executive Board opens a lot of opportunities for involvement and the chance to make lifelong friendships. Applications for these positions open in the Spring semester!



## Panhellenic Directors



Panhellenic Directors focus on specific areas of the community including philanthropy, recruitment, Panhellenic unity, and collaboration with the other Greek councils, while helping to plan key events like Greek Week and LipSync. Each director works closely with members of the executive council and attends weekly Panhellenic meetings. These positions

are selected in late fall semester and are open to women of any year. Serving as Panhellenic Directors is a great leadership opportunity and allows you to meet a lot of women in other chapters!

# Values Based Recruitment

The formal recruitment process at the University of Tennessee is an exciting time that gives you the opportunities to not only learn more about our Panhellenic chapters, but also about yourself. We all have things in our lives that are important to us, otherwise known as our personal values. Each of our 13 Panhellenic sororities have specific values they were founded on, and take great pride in them. The recruitment process will help you identify which of your personal values align best with our chapter's and help you figure out the place where you feel most at home.



## Potential New Member Check List

- |  |  |
|--|--|
| <input type="checkbox"/> Comfortable Shoes                 | <input type="checkbox"/> Dorm/Apt Key      |
| <input type="checkbox"/> Sorority Booklet                  | <input type="checkbox"/> Cell Phone        |
| <input type="checkbox"/> Umbrella (if rain is in forecast) | <input type="checkbox"/> Open Mind         |
| <input type="checkbox"/> VOL Card                          | <input type="checkbox"/> Positive Attitude |

Please bring as few items as possible during recruitment week. There is no need to bring a purse because you will not be allowed to bring them into the rounds with you or have a place to store them.

## VALUES QUIZ

You are most likely to be anxious about...

- A. Your next big exam
- B. Having to miss your best friend's dinner
- C. Not giving enough back to the community
- D. People misunderstanding your directions

Which person would you choose to have lunch with?

- A. Albert Einstein
- B. Rosa Parks
- C. Oprah Winfrey
- D. Ronald Reagan

You most likely want to spend your Spring Break...

- A. In New York City visiting art museums
- B. On a cruise with your best friends
- C. On a mission trip
- D. Being a camp counselor at a children's camp

Which could you most likely see yourself doing in the future?

- A. Teacher
- B. Social work
- C. Non-profit organization
- D. CEO of a large company

What would you consider your priority at this moment?

- A. Making good grades
- B. Building life long friendships
- C. Bettering your community
- D. Gaining experience to further your leadership skills

You would consider yourself to be...

- A. Studious
- B. A social butterfly
- C. Philanthropic
- D. An organizer

### Results: You Value...

Mostly A's: Scholarship  
Mostly B's: Social Connection  
Mostly C's: Philanthropy and Service  
Mostly D's: Leadership

# Important Dates

April 15th, 2016

Registration Opens

July 25th, 2016

Registration fee increases to \$125 and last day to register for early move in

# August

Sunday	Monday	Tuesday	Wednesday	Thursday	Friday	Saturday
	1	2	3	4	5	6 All letters of recommendation due
7 Registration Closes	8	9	10 Early Move In & PNM Orientation	11 Go Greek Round	12 Philanthropy Round	13 Sisterhood Round 1
14 Sisterhood Round 2	15 Preference Round	16 Bid Day!	17 First Day of Classes	18	19	20
21 New Member Orientation	22	23	24	25	26	27
28	29	30	31			

August 21st, 2016

New Member Orientation is Mandatory for all New Members!

# Policies

## Alcohol Policy

The possession and/or consumption of alcoholic beverages is prohibited on campus at the University of Tennessee. The consumption of alcohol during any organized event sponsored by a sorority or fraternity must be in compliance with all local, state, and federal laws. All recruitment functions associated with any chapter, regardless of location, will be dry. Alcohol shall not be present at any new member program or activity sponsored by a chapter.

## Hazing Policy

“Hazing” refers to any intentional or reckless act which is:

- Directed against any other student that endangers the mental or physical health safety of that student,
- Or which induces or coerces a student to endanger his or her mental or physical health or safety,
- And includes treatment of a violent, abusive, shameful, insulting or humiliating nature.

Participation of students in hazing activities is prohibited, including when connected with initiation into or affiliation with an organization.

For a complete list of University policies, visit [hilltopics.utk.edu](http://hilltopics.utk.edu)!

## EQUAL OPPORTUNITY AND NON-DISCRIMINATION POLICY

The University of Tennessee, the National Panhellenic Conference, and all chapters associated with the Panhellenic Council, in compliance with Title VI of the Civil Rights Act of 1964 and Title IX of the Education Amendments of 1972, do not discriminate on the basis of race, color, religion, national origin, ethnicity, religion, sexual orientation, age, physical or mental disability, or covered veteran status. Violations will be handled by the Office of Student Conduct & Community Standards.

## DISABILITIES

Any woman with special needs due to health or disability is encouraged to contact the Vice President of Recruitment at [utkrecruitment@gmail.com](mailto:utkrecruitment@gmail.com) by August 1st.

## DISCLAIMER

Although the information in this document is believed valid, certain printed material is subject to change without notification.

# Recruitment Schedule

## GO GREEK

THURSDAY, AUGUST 11

- 11:30 AM Eat Lunch On Your Own
- 12:30 PM Meet Buses To Sorority Village
- 1:30 PM Event One
- 1:55 PM Event Two
- 2:20 PM Event Three
- 2:45 PM Event Four
- 3:10 PM Event Five
- 3:35 PM Event Six
- 4:00 PM Event Seven
- 4:25 PM Event Eight
- 4:40 PM Meal Break Provided For You At Sorority Village
- 5:40 PM Event Nine
- 6:05 PM Event Ten
- 6:30 PM Event Eleven
- 6:55 PM Event Twelve
- 7:20 PM Event Thirteen
- 7:45 PM Event Fourteen
- 8:10 PM Event Fifteen

Visit Maximum of all 13 Sororities

## PHILANTHROPY

FRIDAY, AUGUST 12

- 7:00 AM Eat Breakfast On Your Own
- 8:00 AM Meet Buses To Sorority Village
- 9:00 AM Event One
- 9:50 AM Event Two
- 10:40 AM Event Three
- 11:30 AM Event Four
- 12:20 PM Event Five
- 12:55 PM Meal Break Provided For You At Sorority Village
- 2:15 PM Event Six
- 3:05 PM Event Seven
- 3:55 PM Event Eight
- 4:45 PM Event Nine
- 5:35 PM Event Ten
- 6:25 PM Event Eleven

Visit Maximum of 10 Sororities

## SISTERHOOD DAY I

SATURDAY, AUGUST 13

- 8:00 AM Eat Breakfast On Your Own
- 9:00 AM Meet Buses To Sorority Village
- 10:00 AM Event One
- 11:05 AM Event Two
- 12:10 PM Event Three
- 1:15 PM Event Four
- 7:00 PM Preference Orientation & Ice Cream Social With Gamma Chi

Visit Maximum of 6 Sororities

### NEW Bid Day Gifts!

UT is starting a new tradition this year by offering Bid Day Baskets and Gifts. Parents can kick off their daughter's start to the best years of her life with a special package delivered to her on Bid Day. See page 32 for more details from Play Alday.

## SISTERHOOD DAY 2

SUNDAY, AUGUST 14

- 8:00 AM Eat Breakfast On Your Own
- 9:00 AM Meet Buses To Sorority Village
- 10:00 AM Event Five
- 11:05 AM Event Six
- 12:10 PM Event Seven
- 3:00 PM Welcome Week Activities Begin

Visit Maximum of 6 Sororities

## PREFERENCE

MONDAY, AUGUST 15

- 6:00 AM Eat Breakfast On Your Own
- 7:00 AM Meet Buses To Sorority Village
- 8:00 AM Event One
- 9:25 AM Event Two
- 10:50 PM Event Three
- 12:15 PM Event Four
- 3:00 PM Welcome Week Activities Begin

Visit Maximum of 3 Sororities

## BID DAY

TUESDAY, AUGUST 16

- 9:00 AM Eat Breakfast On Your Own
- 10:00 AM Meet Buses To Sorority Village
- 11:30 AM Bids Are Opened
- 12:00 PM Gamma Chi Roll Call
- 12:15 - Bid Day Festivities
- 3:00 PM



# Outfit Examples

## GO GREEK

THURSDAY, AUGUST 11



## PHILANTHROPY

FRIDAY, AUGUST 12



## SISTERHOOD DAY 1

SATURDAY, AUGUST 13



## SISTERHOOD DAY 2

SUNDAY, AUGUST 14



## PREFERENCE

MONDAY, AUGUST 15



## BID DAY

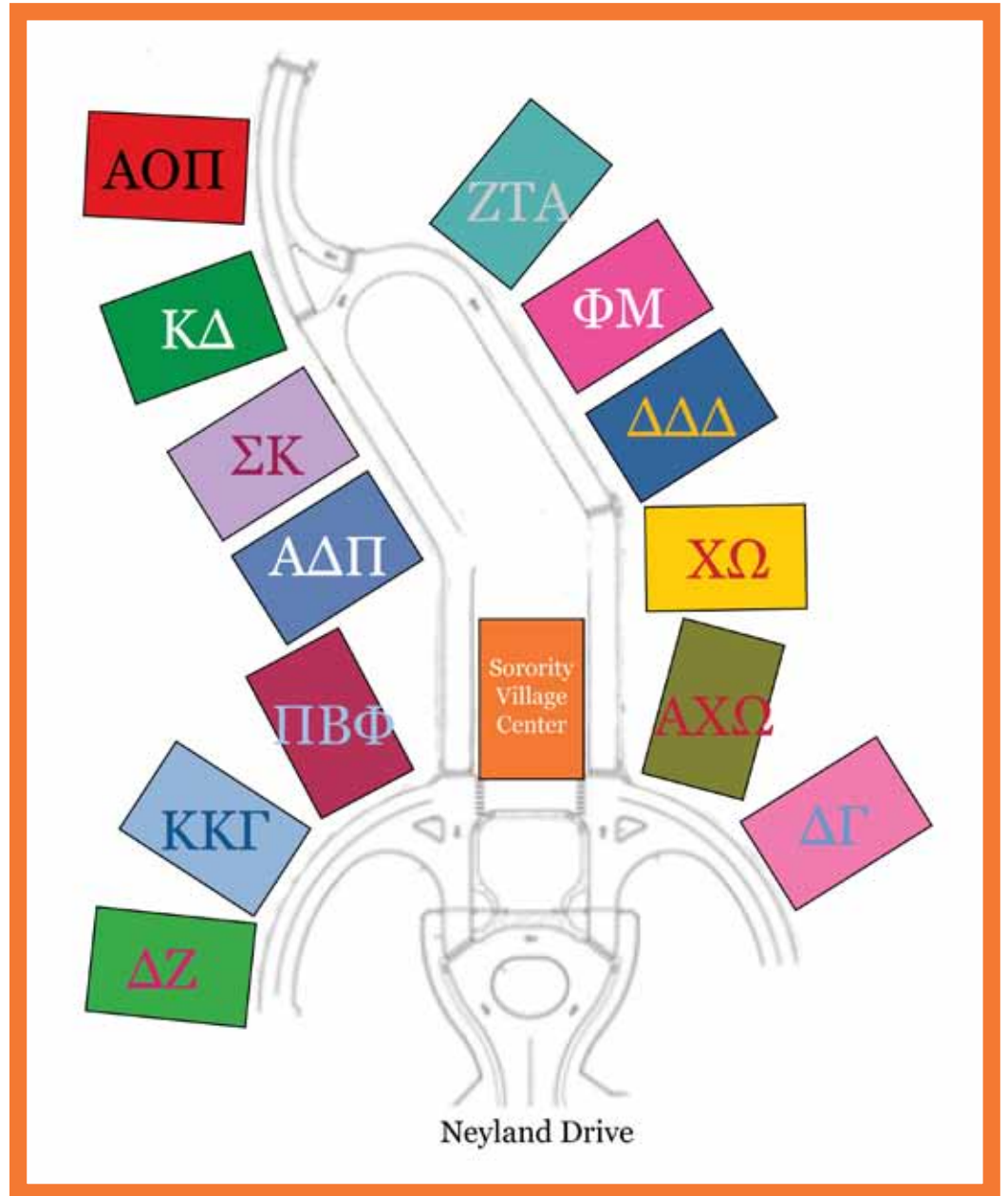
TUESDAY, AUGUST 16



# Greek Alphabet

Α	Alpha
Β	Beta
Γ	Gamma
Δ	Delta
Ε	Epsilon
Ζ	Zeta
Η	Eta
Θ	Theta
Ι	Iota
Κ	Kappa
Λ	Lambda
Μ	Mu
Ν	Nu
Ξ	Xi
Ο	Omicron
Π	Pi
Ρ	Rho
Σ	Sigma
Τ	Tau
Υ	Upsilon
Φ	Phi
Χ	Chi
Ψ	Psi
Ω	Omega

## Sorority Village Map





— THE WOMEN OF —

# alpha chi omega

**The Alpha Chi Omega chapter at the University of Tennessee had a record breaking homecoming with Alpha Gamma Rho Fraternity in 2015, winning seven of eight events and First Place overall.**

National Founding Date.....	October 15, 1885
National Founding School.....	DePauw University in Greencastle, IN
Nickname.....	Alpha Chi
Philanthropy.....	The Alpha Chi Omega Foundation & Supporting the Victims of Domestic Violence
Colors.....	Scarlet Red and Olive Green
Mascot/Symbol.....	Gold Lyre & Red Carnation
New Member Fees(1st sem).....	\$1,117.50
New Member Fees(2nd sem).....	\$897.50
In House Dues.....	\$5,850.00
Out of House Dues.....	\$897.50
High School GPA Required.....	3.25
College GPA Required.....	3.00
National Website.....	<a href="http://www.alphachiomega.org">www.alphachiomega.org</a>
Chapter Website.....	<a href="http://www.utkaxo.com">www.utkaxo.com</a>
Instagram.....	utkaxo

**SEND LETTERS OF RECOMMENDATION TO:**

Alpha Chi Omega  
 ATTN: Recruitment  
 2912 Sorority Village Circle  
 Knoxville, TN 37916



— THE WOMEN OF —

# alpha delta pi

**Ann Baker Furrow is an ADPi alumna of the University of Tennessee chapter. The road that runs through Sorority Village is named after her!**

National Founding Date.....	May 15, 1851
National Founding School.....	Wesleyan College in Macon, GA
Nickname.....	ADPi
Philanthropy.....	The Alpha Delta Pi Foundation benefiting the Ronald McDonald House
Colors.....	Azure Blue & White
Mascot/Symbol.....	Alphie the Lion
New Member Fees(1st sem).....	\$1,439.00
New Member Fees(2nd sem).....	\$955.00
In House Dues.....	\$4,715.00
Out of House Dues.....	\$1,225.00
High School GPA Required.....	3.00
College GPA Required.....	2.75
National Website.....	<a href="http://www.alphadeltapi.org">www.alphadeltapi.org</a>
Chapter Website.....	<a href="http://www.adpiutk.com">www.adpiutk.com</a>
Instagram.....	adpitennessee

### SEND LETTERS OF RECOMMENDATION TO:

Alpha Delta Pi  
 ATTN: Recruitment  
 2621 Ann Baker Furrow Blvd.  
 Knoxville, TN 37916



SEND LETTERS OF RECOMMENDATION TO:

Alpha Omicron Pi  
 ATTN: Recruitment  
 2509 Ann Baker Furrow Blvd.  
 Knoxville, TN 37916

— THE WOMEN OF —  
**alpha omicron pi**

AOPi BBQ, which benefits The Arthritis Foundation, is the longest running philanthropy event on The University of Tennessee's campus.

National Founding Date.....	January 2, 1897
National Founding School.....	Barnard College
Nickname.....	AOPi
Philanthropy.....	Arthritis Research & The Leukemia and Lymphoma Society
Colors.....	Cardinal Red
Mascot/Symbol.....	Panda
New Member Fees(1st sem).....	\$1,217.00
New Member Fees(2nd sem).....	\$905.00
In House Dues.....	\$4,404.50
Out of House Dues.....	\$1,310.00
High School GPA Required.....	3.10
College GPA Required.....	2.75
National Website.....	<a href="http://www.alphaomicronpi.org">www.alphaomicronpi.org</a>
Chapter Website.....	<a href="http://www.utkaoii.com">www.utkaoii.com</a>
Instagram.....	utkaoii



•Chi Omega is recognized as having the most service hours chapter.

— THE WOMEN OF —

chi omega

**Chi Omega is the largest women's organization in the nation.**

National Founding Date.....	April 5, 1895
National Founding School.....	The University of Arkansas
Nickname.....	Chi O
Philanthropy.....	Dream Connection
Colors.....	Cardinal & Straw
Mascot/Symbol.....	Owl, Skull & Crossbones
New Member Fees(1st sem).....	\$1,105.00
New Member Fees(2nd sem).....	\$965.00
In House Dues.....	\$4,455.00
Out of House Dues.....	\$1,205.00
High School GPA Required.....	3.00
College GPA Required.....	3.00
National Website.....	<a href="http://www.chiomega.com">www.chiomega.com</a>
Chapter Website.....	<a href="http://www.utkchiomega.com">www.utkchiomega.com</a>
Instagram.....	<a href="https://www.instagram.com/chiomega_utk">chiomega_utk</a>

**SEND LETTERS OF RECOMMENDATION TO:**

Chi Omega  
 ATTN: Recruitment  
 2630 Ann Baker Furrow Blvd.  
 Knoxville, TN 37916



•Tri Delta is recognized as the highest fundraising chapter.



— THE WOMEN OF —

# delta delta delta

The Tridelta chapter at the University of Tennessee raised over \$110,000 last year for St. Jude's Children's Research Hospital

National Founding Date.....	November 27, 1888
National Founding School.....	Boston University
Nickname.....	Tri Delta
Philanthropy.....	St. Jude Children's Research Hospital
Colors.....	Silver, Gold & Cerulean Blue
Mascot/Symbol.....	Dolphin, Poseidon, Pearl, Pine and Pansy
New Member Fees(1st sem).....	\$1,216.00
New Member Fees(2nd sem).....	\$770.00
In House Dues.....	\$5,020.00
Out of House Dues.....	\$1,370.00
High School GPA Required.....	3.00
College GPA Required.....	3.00
National Website.....	<a href="http://www.tridelta.org">www.tridelta.org</a>
Chapter Website.....	<a href="http://www.trideltautk.com">www.trideltautk.com</a>
Instagram.....	trideltautk

SEND LETTERS OF RECOMMENDATION TO:

Delta Delta Delta  
 ATTN: Recruitment  
 2620 Ann Baker Furrow Blvd.  
 Knoxville, TN 37916



— THE WOMEN OF —  
*delta gamma*  
 ΔΓ

**The Delta Gamma chapter at the University of Tennessee won the Patricia Peterson Danielson Award in 2015 for outstanding community service, an achievement award to chapters that exceed the national standard of excellence.**

National Founding Date..... December 25, 1873  
 National Founding School..... The Lewis School for Girls  
 in Oxford, MS

Nickname..... Dee Gee

Philanthropy..... Service for Sight

Colors..... Bronze, Pink & Blue

Mascot/Symbol..... Anchor

New Member Fees(1st sem)..... \$1,317.00

New Member Fees(2nd sem)..... \$585.00

In House Dues..... \$5,122.00

Out of House Dues..... \$1,467.00

High School GPA Required..... 3.00

College GPA Required..... 2.50

National Website..... [www.deltagamma.org](http://www.deltagamma.org)

Chapter Website..... [www.utk.deltagamma.org](http://www.utk.deltagamma.org)

Instagram..... [deltagamma\\_utk](https://www.instagram.com/deltagamma_utk)

**SEND LETTERS OF RECOMMENDATION TO:**

Delta Gamma  
 ATTN: Recruitment  
 2906 Sorority Village Circle  
 Knoxville, TN 37916





THE WOMEN OF



The Delta Zeta chapter at the University of Tennessee raised over \$10,000 through our 2015 Fall Philanthropy event Hoops for Hearing!

National Founding Date.....	October 24, 1902
National Founding School.....	Miami University of Ohio
Nickname.....	Dee Zee
Philanthropy.....	Speech & Hearing
Colors.....	Rose & Green
Mascot/Symbol.....	Turtle & the Pink Killarney
	Rose
New Member Fees(1st sem).....	\$1,325.00
New Member Fees(2nd sem).....	\$1,082.00
In House Dues.....	\$5,468.00
Out of House Dues.....	\$1,428.00
High School GPA Required.....	3.00
College GPA Required.....	3.00
National Website.....	<a href="http://www.deltazeta.org">www.deltazeta.org</a>
Chapter Website.....	<a href="http://www.dztennessee.com">www.dztennessee.com</a>
Instagram.....	<a href="https://www.instagram.com/dztennessee">dztennessee</a>



SEND LETTERS OF RECOMMENDATION TO:

Delta Zeta  
 ATTN: Recruitment  
 3018 Sorority Village Circle  
 Knoxville, TN 37916



•Kappa Delta is recognized as chapter of the year.

———— THE WOMEN OF ————

# kappa delta

**Kappa Delta has chapter members involved in 73 different organizations on campus.**

National Founding Date.....	October 23, 1897
National Founding School.....	State Female Normal School in Farmville, VA
Nickname.....	Kay Dee
Philanthropy.....	Prevent Child Abuse America & Girl Scouts of the USA
Colors.....	Olive Green & Pearl White
Mascot/Symbol.....	Teddy Bear & Nautilus Shell
New Member Fees(1st sem).....	\$1,055.00
New Member Fees(2nd sem).....	\$540.00
In House Dues.....	\$4,730.00
Out of House Dues.....	\$1,480.00
High School GPA Required.....	3.25
College GPA Required.....	3.00
National Website.....	<a href="http://www.kappadelta.org">www.kappadelta.org</a>
Chapter Website.....	<a href="http://www.utk.kappadelta.org">www.utk.kappadelta.org</a>
Instagram.....	utkkd

**SEND LETTERS OF RECOMMENDATION TO:**

Kappa Delta  
 ATTN: Recruitment  
 2515 Ann Baker Furrow Blvd.  
 Knoxville, TN 37916



— THE WOMEN OF —

# kappa kappa gamma

*Designer Kate Spade and actress Sophia Bush are both sisters of Kappa Kappa Gamma.*

National Founding Date.....	October 13, 1870
National Founding School.....	Monmouth College
Nickname.....	Kappa or KKG
Philanthropy.....	March of Dimes, Reading is Fundamental & Kappa Kappa Gamma Foundation
Colors.....	Light Blue & Dark Blue
Mascot/Symbol.....	Owl, Key & Fleur-de-Lis
New Member Fees(1st sem).....	\$1,245.00
New Member Fees(2nd sem).....	\$650.00
In House Dues.....	\$4,795.00
Out of House Dues.....	\$995.00
High School GPA Required.....	3.30
College GPA Required.....	3.00
National Website.....	<a href="http://www.kappakappagamma.org">www.kappakappagamma.org</a>
Chapter Website.....	<a href="http://www.utk.kappa.org">www.utk.kappa.org</a>
Instagram.....	kkgutk



SEND LETTERS OF RECOMMENDATION TO:

Kappa Kappa Gamma  
 ATTN: Recruitment  
 3010 Sorority Village Circle  
 Knoxville, TN 37916



**SEND LETTERS OF RECOMMENDATION TO:**

Phi Mu  
 ATTN: Recruitment  
 2610 Ann Baker Furrow Blvd.  
 Knoxville, TN 37916



•Phi Mu is recognized as the chapter with the highest GPA.

— THE WOMEN OF —



The Phi Mu chapter at the University of Tennessee won Greek Beat in 2014 and 2015.

National Founding Date.....	March 4, 1852
National Founding School.....	Wesleyan Female College in Macon, GA
Nickname.....	Phi Mu
Philanthropy.....	Children's Miracle Network & East Tennessee Children's Hospital
Colors.....	Rose & White
Mascot/Symbol.....	Quatrefoils, Rose Carnations & Sir Fedel the Lion
New Member Fees(1st sem).....	\$1,319.00
New Member Fees(2nd sem).....	\$846.00
In House Dues.....	\$4,123.00
Out of House Dues.....	\$838.00
High School GPA Required.....	3.00
College GPA Required.....	2.75
National Website.....	<a href="http://www.phimu.org">www.phimu.org</a>
Chapter Website.....	<a href="http://www.utk.phimu.org">www.utk.phimu.org</a>
Instagram.....	phimukappa



THE WOMEN OF

# pi beta phi

**Top fundraising team for Relay for Life at the University of Tennessee for the past 8 years, 2008-Present.**

National Founding Date.....	April 28, 1867
National Founding School.....	Monmouth College
Nickname.....	Pi Phi
Philanthropy.....	Read Lead Achieve benefiting Pi Beta Phi's Literacy Initiatives & Relay for Life
Colors.....	Wine & Silver Blue
Mascot/Symbol.....	Angel & Arrow
New Member Fees(1st sem).....	\$1,454.00
New Member Fees(2nd sem).....	\$784.00
In House Dues.....	\$5,834.00
Out of House Dues.....	\$784.00
High School GPA Required.....	cannot disclose
College GPA Required.....	cannot disclose
National Website.....	<a href="http://www.pibetaphi.org">www.pibetaphi.org</a>
Chapter Website.....	<a href="http://www.pibetaphi.org/pibetaphi/utk">www.pibetaphi.org/pibetaphi/utk</a>
Instagram.....	utkpiphi



SEND LETTERS OF RECOMMENDATION TO:

Pi Beta Phi  
 ATTN: Elizabeth Jankowich  
 3006 Sorority Village Circle  
 Knoxville, TN 37916



— THE WOMEN OF —

# sigma kappa

The Sigma Kappa chapter at the University of Tennessee raised over \$20,000 for Alzheimers Research during the 2015-2016 academic year.

National Founding Date.....	November 9, 1874
National Founding School.....	Colby College, Maine
Nickname.....	Sig Kap
Philanthropy.....	Alzheimer's Tennessee
Colors.....	Lavender & Maroon
Mascot/Symbol.....	Heart & Dove
New Member Fees(1st sem).....	\$1,100.00
New Member Fees(2nd sem).....	\$632.00
In House Dues.....	\$5,384.00
Out of House Dues.....	\$1,756.00
High School GPA Required.....	3.00
College GPA Required.....	3.00
National Website.....	<a href="http://www.sigmakappa.org">www.sigmakappa.org</a>
Chapter Website.....	<a href="http://www.utk.sigmakappa.org">www.utk.sigmakappa.org</a>
Instagram.....	utksigkap

**SEND LETTERS OF RECOMMENDATION TO:**

Sigma Kappa  
 ATTN: Recruitment  
 2601 Ann Baker Furrow Blvd.  
 Knoxville, TN 37916

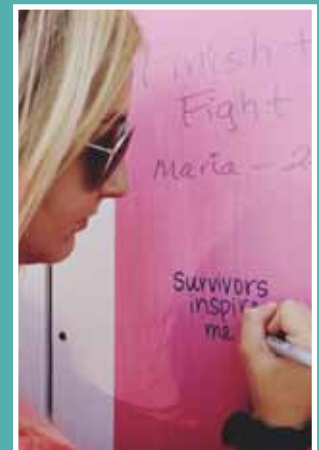


— THE WOMEN OF —

# zeta tau alpha

The Zeta Tau Alpha chapter at the University of Tennessee reached over 18,000 community members in an effort to “Pink Out” Neyland Stadium last October for Breast Cancer Awareness month.

National Founding Date.....	October 15, 1898
National Founding School.....	Longwood College
Nickname.....	Zeta
Philanthropy.....	Breast Cancer Education & Awareness
Colors.....	Turquoise & Gray
Mascot/Symbol.....	Five-Pointed Crown & Strawberry
New Member Fees(1st sem).....	\$1,330.00
New Member Fees(2nd sem).....	\$1,102.00
In House Dues.....	\$4,935.00
Out of House Dues.....	\$1,719.00
High School GPA Required.....	3.20
College GPA Required.....	3.00
National Website.....	<a href="http://www.zetataualpha.org">www.zetataualpha.org</a>
Chapter Website.....	<a href="http://www.utk.zetataualpha.org">www.utk.zetataualpha.org</a>
Instagram.....	utkzta



**SEND LETTERS OF RECOMMENDATION TO:**

Zeta Tau Alpha  
 ATTN: Recruitment  
 2600 Ann Baker Furrow Blvd.  
 Knoxville, TN 37916

## TERMS TO KNOW

### **Active**

a sorority woman who has been formally initiated by her chapter

### **Alumna**

an initiated sorority member who has graduated. These women can provide recommendations for her respective sorority.

### **Bid**

a formal invitation to join a sorority or fraternity issued by the Panhellenic Council or by an individual sorority or fraternity

### **Chapter**

a local group of a national organization, designated by its own Greek letter name

### **Continuous open bidding (COB)**

an informal membership-recruitment process during which bids may be extended and accepted at any time during the school year other than during primary recruitment

### **House director/mother**

a woman who lives in the sorority house and cares for all of the women living in the sorority house. She plans meals and manages the house

### **Initiation**

the formal ceremony which brings new members into full membership of a sorority or fraternity

### **Membership recruitment acceptance binding agreement (MRABA)**

a one-year binding agreement signed by a potential new member at the conclusion of primary recruitment

### **New member**

a woman or man who has accepted a sorority or fraternity bid but is not yet an initiated member

## Frequently Asked Questions

### **What is Formal Recruitment?**

Formal Recruitment is a process by which sororities add members to their chapter. It is set up to give interested women the opportunity to learn more about an organization and its values. The first day begins with everyone visiting every sorority and ends 5 days later with potential new members accepting membership to a specific chapter. Every year, about 1,000 women register for the formal recruitment process! To learn more about the formal recruitment process, check out the 'Pre-Formal Recruitment' and 'Formal Recruitment' pages in this document.

### **What is the difference between Formal and Informal Recruitment?**

Formal Recruitment is a more structured process whereas Informal Recruitment is carried out through Continuous Open Bidding. This can happen at any time during the school year, except during Formal Recruitment. To learn more about Continuous Open Bidding, read its section in 'Terms to Know.'

### **How do I sign up for Formal Recruitment?**

To sign up for Formal Recruitment, go to [www.GoGreek.utk.edu/panhellenic](http://www.GoGreek.utk.edu/panhellenic) and click the registration link. More information on registration can be found in the 'Recruitment Registration' section in this document.

### **What questions should I ask during Recruitment?**

Some of the best questions to ask a chapter member are about her personal experiences with Greek Life. Other good questions to ask are: What does your chapter mean to you? How have you benefited from being a member of your sorority? What kind of scholarships and awards programs does your chapter have? What is your philanthropy and how does your chapter support it? What kind of leadership opportunities does your chapter offer? Remember: the way you get to know a chapter is by asking questions that matter to you.

### **What if I don't visit the maximum number of chapters I've been invited back to each round?**

During Recruitment, the number of chapters a potential new member can visit will vary from one person to the next. It is very common to not have a full schedule. The number of events you attend is not important, but the conversations you have during these rounds will help you make your final decisions about your top choices for membership. If you do not visit all of the chapters you were invited to, you will limit your options for membership throughout the recruitment process.

### **Do most chapters at the University of Tennessee have minimum GPA requirements?**

Yes, all of our chapters have the ability to set their own GPA requirements and many have different policies and expectations for GPA requirements set by their inter/national organization. While academics are very important, your GPA is not the only factor that is taken into account for membership selection and you are encouraged to talk with each chapter about their academic requirements.

### **How will the chapters know my GPA?**

When you register for Formal Recruitment, you will enter your GPA. Your GPA will be verified through the University of Tennessee's records. The University of Tennessee creates your GPA based upon your unweighted, academic core classes like math, science, history, and language arts. Depending upon your individual high school and your non-academic core classes, your GPA that is noted may be different than what is noted on your transcript. The official UTK GPA is what will be used during recruitment and what is distributed to the chapters. If you are concerned about the change in your GPA, you are encouraged to mail a copy of your transcript to Jennifer Pierce, Assistant Director of Sorority and Fraternity Life, 2950 Sorority Village Circle, Knoxville, TN 37916.

### **Do I need to provide my own meals during Recruitment?**

During Go Greek Round and Philanthropy Round, a meal will be provided for you. You will be responsible for providing meals at all other times during the week of Recruitment. Please be sure to get enough sleep and eat a good breakfast every morning throughout the week in order to stay healthy and energized!



### **What does accepting a bid entail? What if I don't want to accept a bid? What if being in a sorority isn't for me?**

Once you have signed the Membership Recruitment Acceptance Binding Agreement (MRABA), you are bound to accept membership from one of the sororities listed on the agreement. If you do not accept membership from any of the chapters listed on the agreement, you must wait another calendar year before accepting an invitation for membership to a Panhellenic Sorority. Not accepting a bid during the Formal Recruitment process will make you ineligible to participate in Continuous Open Bidding. The ultimate decision of accepting an invitation for membership rests with you. If you do not feel that being a part of a sorority is for you, you can withdraw from the process at any time with your Recruitment Counselor.

### **Am I allowed to go to fraternity houses during Recruitment? Am I allowed to participate in fraternity recruitment?**

No. Recruitment focuses on the values of membership and sisterhood and therefore, potential new members and chapter members are not allowed to go onto fraternity property and must avoid consumption of alcohol during the duration of Recruitment. In addition, absolutely no woman will participate in fraternity recruitment. In accordance with Title IX, women cannot partake in fraternity recruitment events if our organizations want to continue as single sex organizations.

### **What if I only want to be in a certain sorority?**

Some Potential New Members may come into the recruitment process only wanting to join a few specific organizations and may experience feelings of disappointment if this want is not satisfied. The Panhellenic Council encourages you to keep an open mind during the recruitment process in order to find an organization that is best suited for you.

### **What are letters of recommendation and do I need them to join a sorority?**

Letters of recommendation are explained in more detail on the 'Pre-Formal Recruitment' page. Check our website for the different requirements and process related to getting letters of recommendation to each specific chapter.

### **If I am going through recruitment as a sophomore or going through recruitment again, am I at a disadvantage?**

Many women choose to go through the Formal Recruitment process as a sophomore or junior for various reasons. Sororities accept women of all ages, as long as they are in good standing with the University of Tennessee.

### **Will I be able to work while being in a sorority?**

Each sorority has different requirements for events and time commitments. Many have optional and mandatory events, but working a part-time job is very possible. Many students in our community hold part-time jobs while participating in their sorority. Chapters understand that many college students have jobs and do their best to work with members to meet financial, attendance, and other obligations. Additionally, many of our sorority members pay for their dues through summer and part-time jobs.

### **Will my grades be negatively affected from being in a Sorority?**

Statistically, women who are involved on campus have a higher GPA. The All-Panhellenic GPA is historically higher than the Undergraduate GPA and All-Women GPA. The All-Panhellenic GPA for Fall 2015 was a 3.21 while the all Undergraduate GPA for Fall 2015 was a 2.99. Each chapter has its own academic requirements and required study hours that will help you stay on track during your time at this university.

### **Can I still be involved in other things on campus if I am in a sorority?**

Absolutely! The Panhellenic Council prides itself in having so many of its members involved in other campus organizations. Women who are more involved on campus are more likely to graduate on time and have a higher GPA.

### **Is it common for women in different chapters to be friends with one another?**

Yes! Panhellenic unity is so important to our community. We love working together on different service projects, fundraising, and other events.

## TERMS TO KNOW

### **New Member Educator**

the officer in each chapter charged with educating new members about the values, history, standards and expectations of the organization

### **Philanthropy**

a specific organization or cause to which members donate volunteer hours and money

### **Potential New Member**

any woman interested in becoming a sorority member who is matriculated and eligible according to College Panhellenic Association requirements

### **Preference**

when a PNM attends more than one Preference Round party but only lists one choice on her Membership Recruitment Acceptance Binding Agreement (MRABA)

### **Quota**

the number of women that a sorority may pledge during recruitment

### **Recommendation**

a letter or form completed by a collegiate or alumna member of a sorority showing support for a potential new member's membership in that organization (Note: not all NPC organizations allow a collegiate member to provide a recommendation for a PNM)

### **Release**

when a PNM's stated willingness to receive an invitation or bid from a chapter does not match with that organization's list of PNMs invited to its recruitment event or membership

### **Ritual**

sacred and inspirational ceremonies used to inspire and educate members about the values of the organization

### **Strict Silence**

the period of time after the close of membership recruitment events and prior to the distribution of bids when there is no communication between PNMs and sorority members

# Bid Day Gift Baskets

Recruitment is right around the corner and Bid Day will be here before you know it. For the first time, UT is offering parents the opportunity to purchase special Bid Day baskets for their daughters. Featuring customized products for their selected sorority, these baskets will be delivered to your daughter on Bid Day. A representative from Play Alday will be at the parent orientation on August 10 to answer questions and accept orders.

### Make Your Daughter's Bid Day Even More Special!

## My Big Fat Greek Basket • \$ 125



- 9" Monogrammed Clear Acrylic Tub
- Logo Fan
- Logo Poster
- 8 - 5.5" x 4.25" Notecards & Envelopes
- 3.5" Spirit Button
- 3.5" Spirit Magnet
- 3.5" Spirit Compact Mirror
- 5" Circle Monogram Decal
- Monogram Huggie
- Monogram Key Chain
- Logo Cell Phone Pocket
- Logo Coffee Tumbler
- Logo Portable Charger
- Candy
- Cookies
- Snack Mix

Save 10%  
If you order by  
August 1, 2016

## Reserve Your Bid Day Basket Today!

Call or E-mail Tiffany Alday

Tiffany Alday • [tiffany@aldaycommunications.com](mailto:tiffany@aldaycommunications.com) • (c) 615-714-4945



In order to guarantee delivery on Bid Day, orders must be placed by August 10. Payments will only be processed if your daughter receives a bid from a sorority. If she chooses not to complete the recruitment process, your pre-payment will not be charged.



All Campus Events  
 Welcomes you to the  
 University of Tennessee  
 and encourages you to  
 #GOGREEK

Please check out our  
 competitions at:

[homecoming.utk.edu](http://homecoming.utk.edu)  
[carnicus.utk.edu](http://carnicus.utk.edu)  
[allsing.utk.edu](http://allsing.utk.edu)

**Diva Nails & Spa**  
 (865)282-3482

**STUDENT DISCOUNTS & MORE...**

*SERVICES:*  
 \*Acrylics  
 \*Gel nails  
 \*Solar nails  
 \*Pink & White  
 \*Shellac (gel polish) manicure  
 \*Eyebrow & Lip waxing  
 \*Standard, Deluxe, Royal, Signature Pedicure  
 \*Standard, Deluxe, Royal, Signature Manicure  
 \*Acrylic Gels

5201 Kingston Pike Knoxville | Acropolis Spa, Nana and more... | PETS & Ricardog Bakery

Back to Map

Image courtesy: Oct 2014 © 2015 Google Terms Privacy Maps

*Add a chapter to your life with an event  
at the Hall of Fame*



**700 Hall of Fame Drive  
Knoxville, TN 37915  
(865) 633-9000  
[wbhof.com/Facility.html](http://wbhof.com/Facility.html)**



# ACHIEVEMENT

— IS JUST —

BUSINESS AS USUAL

Join the world's largest CO-ED Professional Business Fraternity

Alpha Kappa Psi!

Open to all majors!

[www.utkakpsi.com](http://www.utkakpsi.com)

**BYA**

*Good Luck*

*With Recruitment From The Brothers of Beta Upsilon Chi*

"One who has unreliable friends soon comes to ruin, but there is a friend who sticks closer than a brother."

Proverbs 18:24

**The men of Kappa Sigma look forward to seeing you at South Seas!**

Consultant: Harriet Dodd  
 (615) 566-3857  
 thedodd5@comcast.net  
<https://harriettodd.myrandf.com>

SO MUCH MORE THAN SKINCARE

**RODAN+FIELDS**

# Student Living *Redefined*



## Unrivaled Amenities Incredible Rates!

- Lazy River Pool
- Largest Hot Tub in Knoxville
- Resort-Style Clubhouse
- Oversized Fitness Center
- Property-Wide Hiking Trail
- Off-Leash Dog Park
- Outside Fire Pit
- Outdoor Gaming Area
- 4 & 5 Bedroom Townhomes
- Huge Bedroom Suites with Private Bathrooms & Walk-in Closets
- Granite Countertops
- Stainless Steel Appliances
- Fully Furnished
- Free High Speed Wi-Fi & Cable TV
- Pet Friendly



Visit our Leasing Office:  
2453 University Commons Way  
844-454-8244

Property Address: 1430 Cherokee Trail



Yes...  
That's a  
lazy River!

Largest  
Hot Tub  
in Knoxville!

[www.KnoxRidge.com](http://www.KnoxRidge.com)



#LiveBigKnox



**SIGMA NU FRATERNITY**  
 Excelling with Honor



MY KIND OF  
*lovely*

[www.mykindoflovely.com](http://www.mykindoflovely.com)

*Go Greek & Shop Lovely!* gifts + clothing & now greek goods!

- **BID DAY GIFTS FOR PREORDER!** call 423.836.1054 for info!
- **FREE DELIVERY TO CAMPUS & SORORITY VILLAGE!**
- **VISIT OUR NEW KNOXVILLE LOCATION -**  
 9700 Kingston Pike #18A, Knoxville, TN 37922
- **FOLLOW US ON INSTAGRAM & FACEBOOK:** @mykindoflovely





Welcome to Moe's  
Country!!!



Remember we cater:  
865-696-2006!

Every Monday  
\$5.95 any Burrito

1800 Cumberland Avenue



# PHI GAMMA DELTA

The Brothers of Phi Gamma Delta

Wish you the best of luck during recruitment.



real fitness

real results



real hot yoga



Make Real Hot Yoga your

# HAPPY HOUR!

38 classes to choose from  
open 7 days per week

**\$30**

30-day Intro offer  
use promo code  
"GREEK"  
(reg. \$40)

**\$89/month**

unlimited  
membership with  
Student ID

**20% off**

5 & 10-class  
packs with  
student ID

8023 Kingston Pike, Suite 5  
Knoxville, TN 37919  
(in the Trader Joe's Shopping Center)

realhotyoga.net  
(865)312-9674

The Brothers of Sigma Chi would like to wish all of you a fun and successful recruitment!



**CATERING**

Classic Menu \$8.50/person

Baby Spinach Salad with Fresh Berries, Mandarin Oranges and our Signature Poppyseed Dressing, Grilled Chicken Breast, Red Skin Mashed Potatoes, Rolls, and Brownies

**Other Options:**

Grilled Flank Steak (add \$1.50/person)  
 Grilled Pork Tenderloin (add \$1/person)  
 Grilled Vegetables (add \$1/person)  
 Sesame Snap Peas (add \$1/person)  
 Green Beans (add 50¢/person)

Baked Ziti/Homemade Chili Bar \$9/person

Homemade Turkey Chili and Baked Potatoes served with Sour Cream, Cheese, Bacon Bits, your choice of any Brown Bag Salad, Fritos and Brownies.

Fajita Bar \$10/person

Seasoned and Grilled Chicken and Steak, Sautéed Fajita Peppers and Onions, Tortilla Chips and Brownies, Salsa, Shredded Cheese, Lettuce, Sour Cream, Choice of any Brown Bag Salad

Sandwich Builder \$9/person

Build your own sandwich with all the toppings Brown Bag has to offer. Comes with Chips, Brownies, and your choice of any Brown Bag Salad.

**Drink**

Sweet Tea, Unsweet Tea \$5/gallon  
 Lemonade \$4/half gallon

\*All catering orders come with plates, utensils, napkins, and serving utensils as well as cups and paper if drinks are purchased.

(865) 228-3283  [brownbagnow.com](http://brownbagnow.com)

**CATERING**

**TO-GO ORDERS**

There is an 8 person Maximum for To-Go orders. Have a bigger order? We suggest our Catering options for your next lunch, event, or dinner.

**CATERING DELIVERY**

Please give us at least a 24-hour notice for catering orders.  
 • 10 person minimum for delivery orders  
 • 30 person minimum for weekday dinners\*  
 • 75 person minimum for weekend dinner\* orders

\*Dinner/weekend orders must be made 7 days in advance.

\*Cancellations must be made 24 hours in advance. Any orders cancelled inside 24 hours will be charged 50% of the order.

**CATERING PICK-UP**

Please give us at least a 24-hour notice for pick-up catering orders. There is no minimum or maximum for pick-up catering orders.

Cancellations must be made 24 hours in advance. Any orders cancelled inside 24 hours will be charged 50% of the order.

**RESTAURANT LOCATIONS**

**Hardin Valley**  
 10649 Hardin Valley Rd

Monday-Friday  
 11AM - 2PM

(865) 474-0659

**Downtown Knoxville**  
 800 South Gay Street

Monday-Friday  
 7:30AM - 2PM

(865) 474-0587

(865) 228-3283  [brownbagnow.com](http://brownbagnow.com)



bring this ad in for 15% off one item. expires: 12/01/16

**Studio6**  
 4447 Kingston Pike  
 Western Plaza Shopping Center  
 865.337.7456  
[www.shopstudio6.com](http://www.shopstudio6.com)


Good Luck This Week  
From The Brothers of Phi Kappa Psi



Check housing  
off your list for  
Fall 2017!

SECURE YOUR SPACE TODAY!



 UNIVERSITYWALK

UWALKKNOXVILLE.COM  
2308 Forest Avenue  
865.247.7231

 AMERICAN  
CAMPUS  
COMMUNITIES

Where students love living.<sup>®</sup>  
AMERICANCAMPUS.COM



# Silver Wings

## Lt. General Frank M. Andrews Chapter

We are civilians dedicated to creating proactive, knowledgeable, and effective civic leaders through community service and education about national defense.

### OUR MISSION INCLUDES:

- Personal/Professional Development of Members
- Community Service and Fundraising
- Promoting Civic Awareness of the U.S. Air Force



For more information, email [silverwingsutk@gmail.com](mailto:silverwingsutk@gmail.com),  
Or find us on Twitter & Instagram @UtkSilverWings!

# COME MEET THE LOCALS!



(Our Staff Eagerly Awaits Your Arrival!)



[www.bearlyrustic.com](http://www.bearlyrustic.com)

Check Availability & Reserve On Line  
TOWNSEND PROPERTY MANAGEMENT GROUP, INC.

**Student Alumni Associates... "Students serving students...past, present, and future." Join the Student Alumni Associates (SAA) and help advance the University and enrich the lives of students and alumni.**

## SAA ACTIVITIES INCLUDE:

The Big Orange Bash ..... I Heart UT Week ..... Dinner with 12 Vols  
Alumni Reunions ..... Alumni Receptions and Tailgates ..... Homecoming Activities  
Official Hosts for the Chancellor's Skybox



For more information visit [volsconnect.com/saa](http://volsconnect.com/saa)

# TURBOSPIN

an indoor cycling experience

INDOOR CYCLING. TURBOCHARGED.

First Class is FREE!

Student Rates Available

[www.turbospinbicycling.com](http://www.turbospinbicycling.com)  
215 Brookview Centre Way | Suite 106  
865-312-9256



# RUF

REFORMED  
UNIVERSITY  
FELLOWSHIP



UNIVERSITY OF  
TENNESSEE

**RUF WISHES THE LADIES GOING THROUGH  
RECRUITMENT GOOD LUCK!**

**AMB 210. 7:30 PM. TUESDAY NIGHTS.**

[www.utk.ruf.org](http://www.utk.ruf.org)



THE PREMIER BRAND FOR  
CUSTOM GREEK APPAREL!

geneologie.

Start a  
Proof Today!



FOLLOW US ON PINTEREST FOR  
NEW ART AND CONTESTS!

[www.geneologie.com](http://www.geneologie.com)

HAVING FUN DURING RECRUITMENT!



  
**PALM VILLAGE**  
A *Lilly Pulitzer* Signature Store

CLASSIC DRESSES  
**ALL  
SEASON  
LONG**

4485 Kingston Pike  
865.281.5917  
[www.shoppalmvillage.com](http://www.shoppalmvillage.com)  
[www.facebook.com/lillypultzerknoxville](http://www.facebook.com/lillypultzerknoxville)





**THE  
WALK**

**8.21.2016 @ 8PM**

**THE MILL & MINE**  
299 W DEPOT AVE, 37917

**LIVE MUSIC.**  
**FREE FOOD.**

*Fashion trends come  
and go... Sorority  
Sisterhood is forever!  
Let your sisters keep you  
grounded in life, and let  
Lizard Thicket keep you  
grounded in the newest  
styles!*

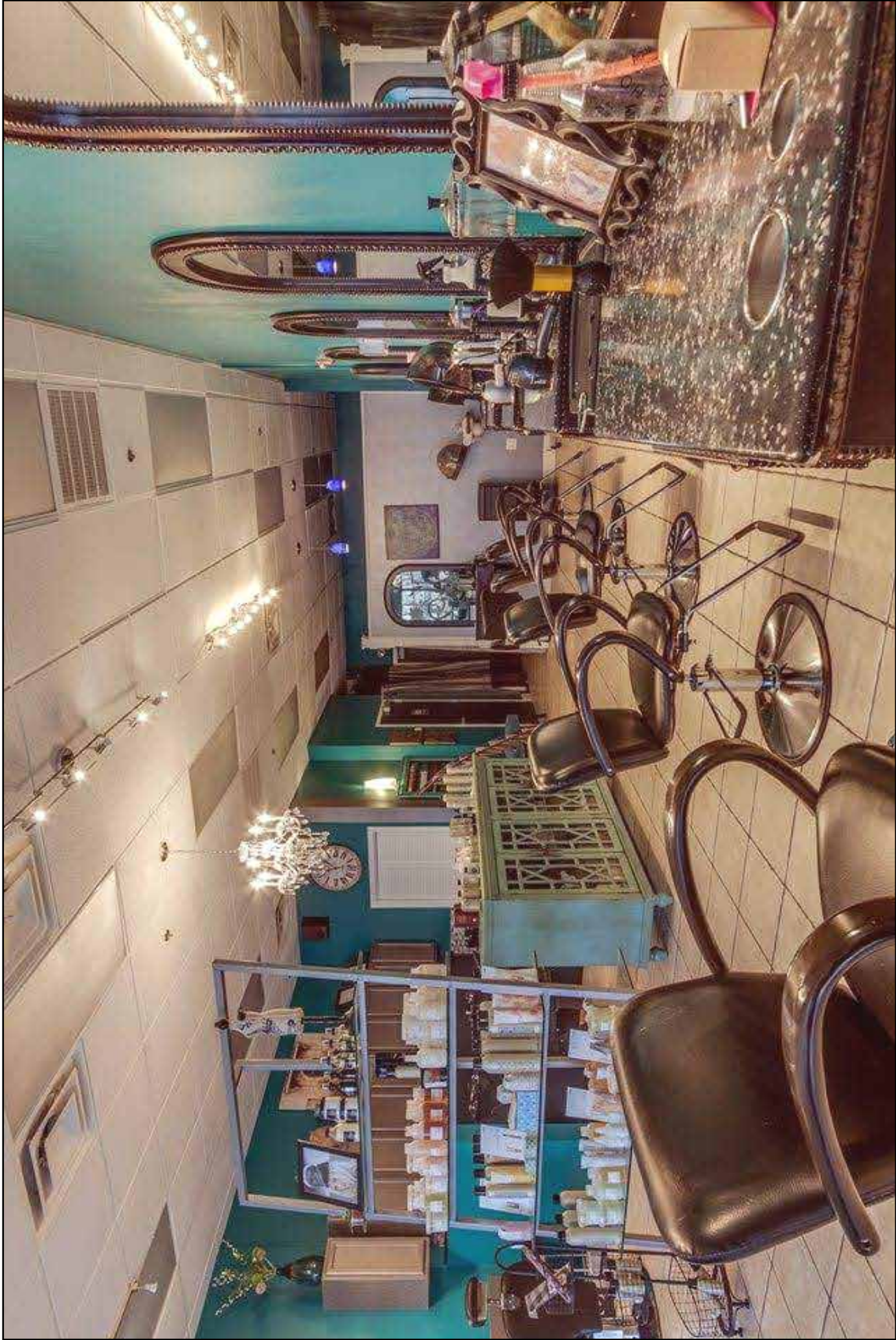


# Lizard Thicket

*Knoxville*

TURKEY CREEK  
11369 PARKSIDE DRIVE  
KNOXVILLE, TN 37934  
865-671-0684

Follow us: @lizardthicketboutique  
f  [www.shoplizardthicket.com](http://www.shoplizardthicket.com)  



# All Davines Salon: Selling UT Apparel & Accessories



# QUARRY TRAIL

Call 865-523-2727



*Love Where You Live*



**FREE SHUTTLE TO  
CAMPUS & GAMEDAY  
SHUTTLE!**



- MONTHLY SOCIAL ACTIVITIES • FITNESS CENTER
- HIGH SPEED INTERNET W/CABLE & HBO • FULL KITCHENS
- MONITORED ALARMS • FULL SIZE W/D • 1,2,3 & 4 BEDROOMS

**THE BEST STUDENT LIVING NEAR THE UNIVERSITY OF TENNESSEE**



**UT'S COLOR  
& CUT SPACE.**

SULFATE FREE.  
PARABEN FREE.  
CRUELTY FREE.  
AMMONIA FREE.  
ECO-FRIENDLY.

**10% OFF WITH YOUR  
UT ID.**

DOWNTOWN KNOXVILLE  
300 W. FIFTH AVE  
KNOXVILLE, TN 37917  
4 BLOCKS N. OF MARKET  
SQUARE

**TAKE THE TROLLEY  
DIRECTLY HERE!**

**FOLLOW US ON INSTA  
& FB FOR CHANCES  
TO WIN  
BIG.**





**THURSDAYS 8PM**

cru UNIVERSITY OF TENNESSEE KNOXVILLE

Find us on: **facebook**

**“UTKCRU”**

**VISIT US**

**UTKCRU.COM**

Good Luck during formal recruitment!



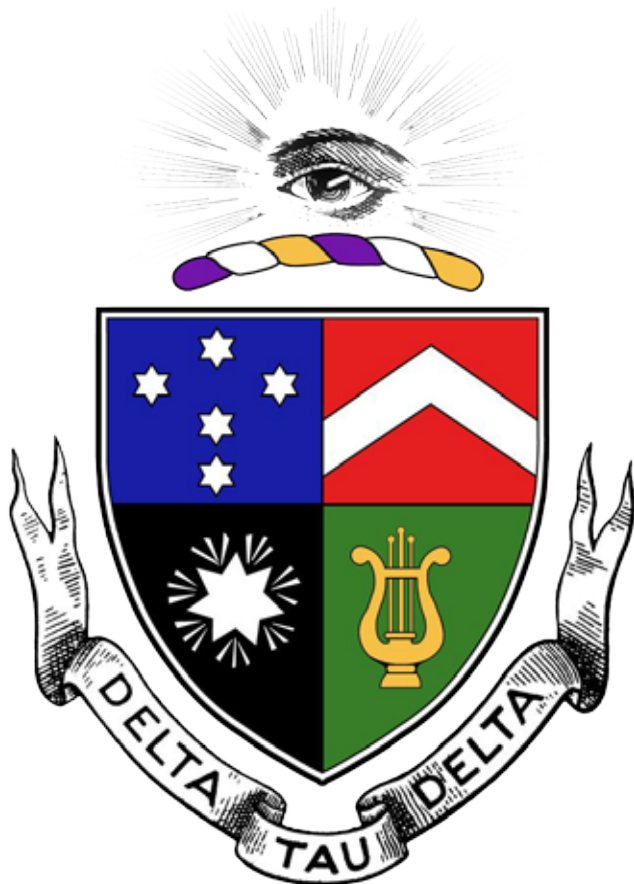
the brothers of  
Sigma Phi Epsilon



# VOLUNTEERS FOR CHRIST

Volunteers for Christ is a campus ministry based out of Cornerstone Church of Knoxville. We exist to proclaim, love, and demonstrate the Gospel of Jesus Christ to the students of UTK. Join us Tuesday nights for Bible studies in most dorms, Thursday nights for our corporate meeting, or Sunday mornings for church. We'd love to serve you in any way we can. Check out our website for more information.

@vols4christ    [www.vols4christ.com](http://www.vols4christ.com)



# Good Luck During Recruitment!

the brothers of  
Delta Tau Delta



NEIGHBORHOOD  
barre



# STUDENTS

FREE FIRST CLASS  
FIRST TIME MONTH UNLIMITED \$80  
FULL PRICE MONTH UNLIMITED \$100

*The next **BIG** thing in barre! **CHANGE** your body in record time with our fast-paced, muscle-toning 55 minute classes!*



We are located only 2 miles from UTK campus at 4445 Kingston Pike in the Western Plaza Shopping Center. Book your FREE CLASS today!  
865.692.1148 [knoxville@neighborhoodbarre.com](mailto:knoxville@neighborhoodbarre.com) [www.neighborhoodbarre.com](http://www.neighborhoodbarre.com)





THE KNOX



## SOUTHERN CHARM ▪ WITH A TWIST ▪

**VISIT THE KNOX TODAY**  
AND EXPERIENCE THE NEWEST STUDENT  
LIVING COMMUNITY AT UT!

Our incredible community is just 100 feet from campus and offers amazing amenities, including The Deck, our outdoor entertainment space, The Hangout, Wired, and more. Sign a lease online today using **promo code SCOPE**.

**VISIT US ONLINE AT [LIVETHEKNOX.COM](http://LIVETHEKNOX.COM)**

1511 CLINCH AVE., KNOXVILLE, TN 37916 • (865) 297-4455



# THE STANDARD



**NOW LEASING  
FOR FALL 2017**



## LUXURY STUDENT LIVING

1, 2, 3, 4 & 5 bedroom floorplans | resident clubhouse with a state-of-the-art fitness center  
computer lab with iMacs & PCs | private group study room  
PGA-quality golf simulator | resort-style swimming pool | free tanning  
Starbucks™ coffee bar | clubroom with billiards table & shuffle board  
705 S. 17th Street | Knoxville, TN 37916 | (865) 444-2150 | [TheStandardAtKnoxville.com](http://TheStandardAtKnoxville.com)